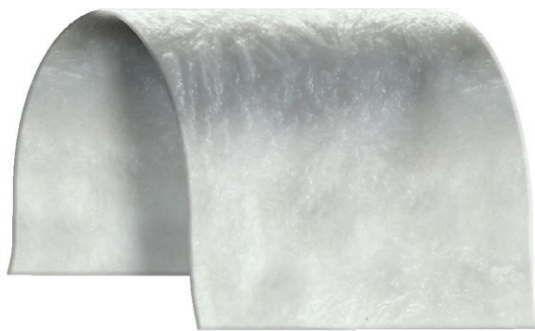




ESSENTIAL bioLOGICS

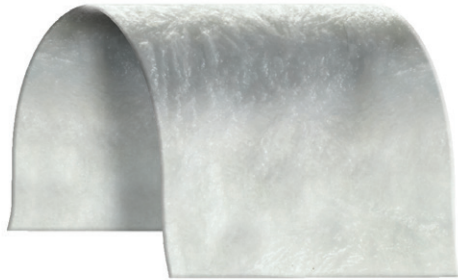


bioADAPT
collagen dental membrane



bioADAPT

collagen dental membrane



OUSIA bioADAPT Resorbable Collagen Membrane

bioADAPT is a resorbable collagen membrane matrix made from Type I Bovine Collagen. Its pliable characteristics and predictable resorption time of 3-4 months¹ make it an ideal membrane for guiding the healing of bone and surrounding tissue. When hydrated, bioADAPT will naturally adapt to surgical defects and maintain a high tensile strength, which make it the ideal membrane for suturing.

With its in vivo stability, permeability and mechanical strength, bioADAPT is a reliable choice for various clinical applications. When used in conjunction with a bone grafting particulate, bioADAPT can help mitigate the migration of the particulate from the surgical site. Its resorbability eliminates the need for surgical removal. bioADAPT is packaged sterile, non-pyrogenic, and for single use.

Features

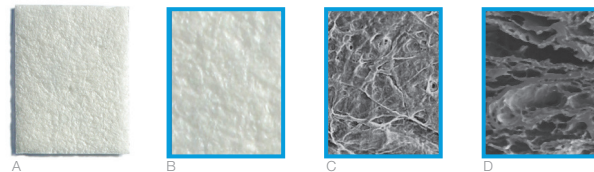
- Fully resorbable with a predictable resorption time of 3-4 months¹
- Easy to handle, conforms to the surgical site without reshaping and does not adhere to itself
- Guides healing and regeneration of bone and surrounding tissue
- Unique fiber orientation provides high tensile strength for in situ stability of membrane
- Cell occlusive, designed to retard and/or prevent epithelium down growth

Advantages

- Conforms to surgical site without re-shaping
- Easy to handle, does not adhere to itself
- Sufficient resorption time for sustained function in bone repair
- Can easily be trimmed during surgery for a final fit
- May be placed with either side against the tissue or bone

Typical Uses

- Ridge augmentation
- Bone regeneration around implants
- Sinus lift
- Periodontal defects
- Apical root resection
- Extraction sites

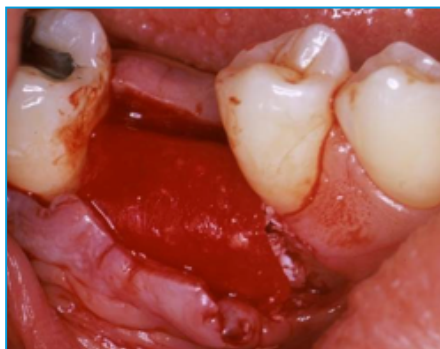
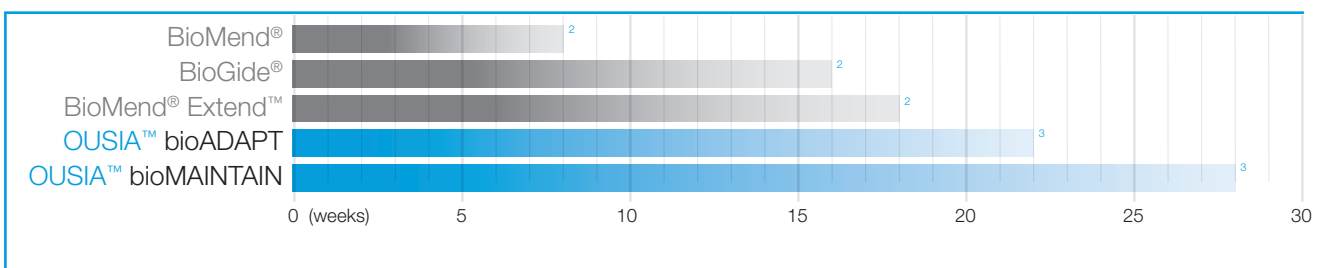


Ousia bioADAPT:

- A Shown actual size (15mm x 20mm)
- B Detail - 3x magnification
- C Detail - 100x magnification
- D Cross Section - 100x magnification

Resorption Profile

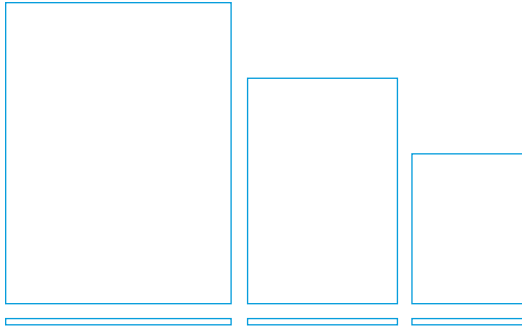
Approximate In Vivo Resorption Time:



Membrane being used to protect site and contain graft material.
Membrane was easily trimmed to fit around adjacent dentition.

OUSIA resorbable collagen membranes have been developed with a proprietary fiber orientation, which allows for optimal space maintenance and mechanical strength. Upon hydration, they are flexible and ideal for suturing.

Surgical imagery provided by:
Dr. Aron Gonshor, Quebec, Canada



bioADAPT Collagen Dental Membrane

US	Outside US *	Membrane Size
OUSB1S	OUSB1EU	15mm x 20mm x 1mm thick
OUSB2S	OUSB2EU	20mm x 30mm x 1mm thick
OUSB3S	OUSB3EU	30mm x 40mm x 1mm thick

* Products may not be available in all countries. Please contact your local representative for more information.

¹ D.Yuen, J. Ulreich, G. Zuclich, H-B. Lin and S-T Li
“Prediction of In Vivo Stability of a Resorbable, Reconstituted Type I Collagen Membrane by In Vitro Methods.”
2000 Society for Biomaterials - Sixth World Congress.

² Reported from the product’s Instructions for Use.

³ Data on file.

Copyright © 2023

bioADAPT membranes are manufactured by Collagen Matrix, Inc.,
15 Thornton Road, Oakland, NJ 07436, USA.

BioGide® is a registered trademark of Geistlich, Wolhusen, Switzerland.
BioMend® and BioMend® Extend™ are registered trademarks of
Zimmer Dental, Carlsbad, CA

OUSIA-ADAPT-SS-REV.B-SA

 **HENRY SCHEIN**®
DENTAL WAREHOUSE

Website: www.henryschein.co.za

Toll free number: **0800 111 796**

Email: info@henryschein.co.za



ousiaessentials.com